

UNIFORM

# Uniform - clarification

| <u>ITEM</u>  | <u>FURTHER CLARIFICATION</u>  |
|--|---|
| <b>Blazer</b><br>Black with embroidered Heathland badge  | Compulsory- it is to be worn at all times unless given permission by a teacher.   |
| <b>Tie</b><br>Lower School House Tie Years 7-9<br>Upper School House Tie Years 10 & 11                               | Must cover the top button on the shirt<br>For House colours see the next slide.   |
| <b>Shirt</b><br>Plain and white<br>Collars must be designed to accommodate a tie and have a top button which fastens | Shirts must be sufficiently generous to tuck fully into the skirt/trousers.<br>Top button must be done up and shirts must be tucked in. |
| <b>Jumper</b><br>Black school V-neck jumper with Heathland logo  | The jumper is optional; it cannot be worn in place of a blazer. Cardigans are not to be worn and hoodies are not permitted              |
| <b>Socks/Tights</b><br>Plain black socks<br>Plain black tights   | No 'leg warmers' or to the knee socks. No coloured socks of any kind  |

ADAM & KENT

BANKS & JENNER

DICKENS & SHERIDAN

GRESHAM & PALMER

HOGARTH & TURNER

## Trousers

Plain black straight cut trousers

Sufficiently tailored to keep the shirt tucked in

Trousers must not be skin tight or boot cut and must have a natural hang

Belts must be plain black and without large buckles

Acceptable



Not Acceptable



**Skirt**

Black Formal and knee length

Sufficiently tailored to keep the shirt tucked in

Must be formal with no slits - A-line design. Fitted / tight skirts are not permitted



Acceptable



Not  
Acceptable

**Shoes**

Black (upper and sole)

Smart, plain and able to be polished

Ballerina pumps, trainer style shoes (even if leather), converse style footwear, boots and kickers are not permitted as they are not formal school footwear



**Acceptable**



**Not  
Acceptable**

# Uniform - clarification

| <b><u>ITEM</u></b>   | <b><u>FURTHER CLARIFICATION</u></b>   |
|--|---|
| <b>Scarf and Gloves</b><br><br>Must be plain black   | These can be worn to and from school but must be removed upon entering the school building.   |
| <b>Outdoor coats</b><br><br>Must be either black or dark blue  | These can be worn to and from school but must be removed upon entering the school building.<br>Leather jackets or sports jackets including hoodies are not permitted  |
| <b>Jewellery</b><br><br>One small single plain stud earring may be worn in each ear lobe<br><br>Rings, necklaces, bracelets must not be worn | No other piercing is acceptable e.g. cartilage of ear, eyebrow, nose or lip. Excuses that they cannot be taken out because they have only just been done will not be accepted and pupils will be instructed to remove them. |
| <b>Make up</b><br><br>Make up of any form is not permitted   | No mascara, foundation, coloured lip-balm, false eye lashes or coloured contact lenses.<br>Artificial nails or nail varnish are not permitted and students will be instructed to remove them                                |

**Hair**

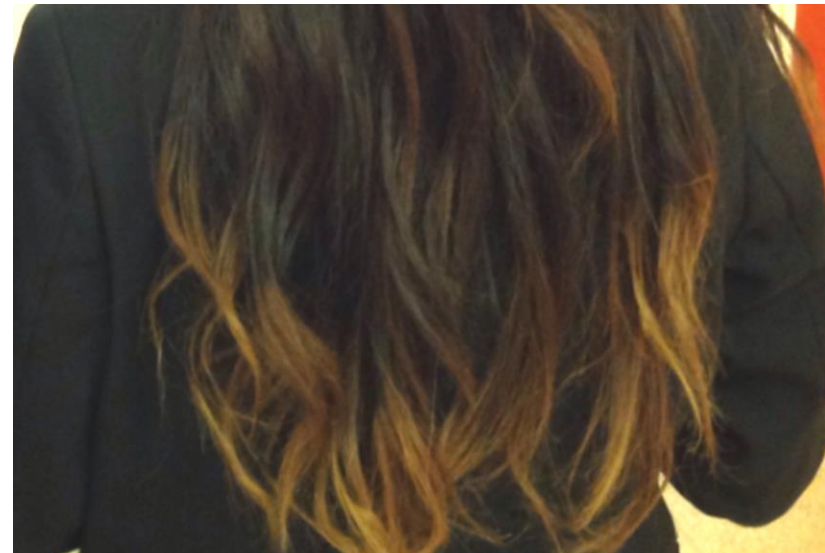
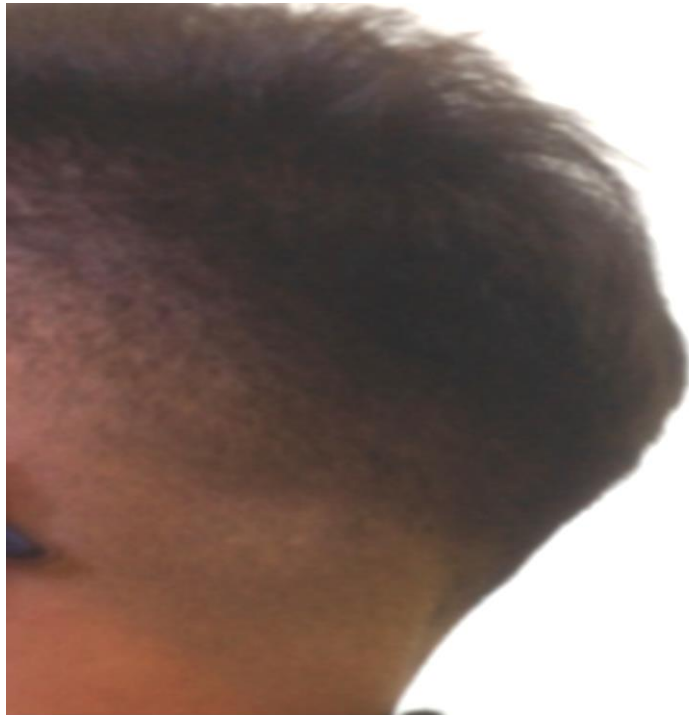
Hair bands, ribbons, clips and any other item used in the hair should be plain black

Hair should be smart and formal.

No distinctive flowers, frills or large bows. Dyed hair of any type or any other type of distinctive/extreme hairstyles are not permitted.

No shaved designs or lines are allowed in hair or eyebrows.

Not Acceptable





**Bags**

Must be dark blue or black in colour

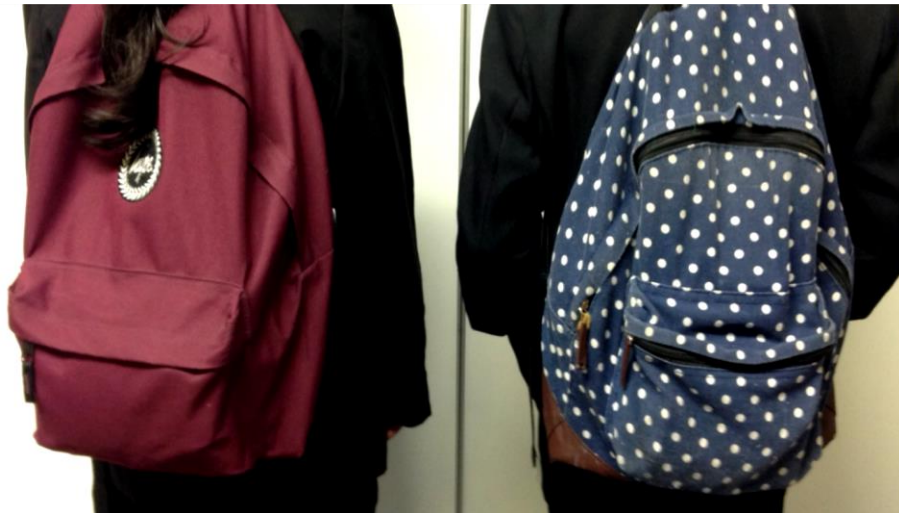
Large logos, which cover more than 50% of the bag, are not acceptable nor are handbags for girls.

Bags should be big enough to hold equipment and school books up to A4 size.

Acceptable



Not Acceptable



# School Policy

Pupils are expected to wear correct uniform at all times including on their journey to and from school.

The school believes that a smart and formal appearance is important in encouraging pupils to take pride in themselves and to strive to maintain high standards in all aspects of school life. The only symbol to be displayed is the school badge.

## School Policy continued

If pupils are not in **full school** uniform they **will not** be able to attend lessons.

**Pupils will work in the school's internal exclusion room (205G) until the correct uniform is worn.**